

A wonderful range of high quality greenhouses from Summer Greenhouses. We deliver to any UK mainland address. These greenhouses are suitable for DIY self assembly but if required our low cost professional installation service is available throughout England and Wales and in many parts of Scotland. For further information and current prices please phone us free 7 days a week on 0800 9777 828 or visit our website at www.SummerGreenhouses.com

Robinsons Premier Aluminium Greenhouses

Established for nearly 60 years, market leading Robinsons Greenhouses have long been the benchmark against which other greenhouses are measured. The secret of good design is in the detail, and Robinsons is no exception to the rule. From the amount of material used, to the design of the sections, the unique glazing system, the inclusion of 4mm toughened safety glass as standard, the ease of access, particularly for disabled users, the maximised eaves height, automatic openers supplied as standard on roof vents, a range of options to personalise your greenhouse design, a choice of finishes, flexibility in the range so you can choose the optimum size for your needs. All these features are designed with one thing in mind - you, the greenhouse user.

Uncompromising Strength - The strength and durability of Robinsons is legendary! We use over 25% more aluminum than most other greenhouses of a comparable size. In fact the whole range is technically over specified with the greenhouses designed to cope with gale force winds and heavy snow falls. Not a usual British winter!

Almost 60 years of experience - Our reputation has been built on quality, attention to detail and innovation. All our great looking and practical designs have been developed from original greenhouses built for the professional nurseryman.

Toughened Safety Glass as standard - for added strength, safety and your peace of mind, 4mm toughened glass to BS6206 Class A is supplied as standard.

Easy Access - for unimpeded access Robinsons greenhouses have a level threshold, so NO step! This is ideal for wheelbarrows and wheelchairs, and with three models having wide double doors, there is plenty of extra space to get in and out.

Extra height - Robinsons have the highest eaves height of any similar greenhouse in the UK. More than 5'6" / 1691mm, it gives additional room providing a pleasant working environment with out bending, room to fit high level shelving to increase your effective growing capacity and gives tall plants, tomatoes, chrysanthemums, etc room to thrive. This eaves height is provided without having to increase the roof pitch, combining practicality with good looks, another feature of good design. Dwarf Wall greenhouses provide over 5'9" / 1752mm to eaves and in the case of the Riviera it is a massive 6'8" / 2035mm.

Design detail - full lengths of glass are used and bedded onto soft glazing rubber cushions, avoiding the unsightly build up of algae. Stainless steel screws are used to hold things together, which means no unsightly clips. Then a uPVC capping is fixed to conceal all screws. Small details that make the big difference.

Choice of finishes - green, white or mill, maintenance free finishes are available - use your time growing plants, not treating your building!

FREE 10 year no quibble frame guarantee -giving you peace of mind. We have been established since 1947 so our 10 year guarantee really means something. If any components prove to be defective, they will be replaced. We know of no unhappy customers - if anyone reports a problem, we will do whatever is necessary to resolve it. We have never left a customer unhappy.

Summer Greenhouses does not guarantee that this is the most recent version of this brochure or that all information is accurate or that it has been accurately reproduced. You are advised to refer to our website for the current specifications and other information. No guarantee is given regarding the accuracy of this brochure and no liability will be accepted for any errors or inaccuracies.

SummerGreenhouses.com is a specialist greenhouse website administered by Summer Garden Buildings, a leading UK retailer of garden and leisure buildings.

Robinsons

Premier Aluminium GREENHOUSES



*Quality
for a lifetime of
gardening success*

Regent 6^{WIDE}



Dwarf Wall option available. See page 9



6 x 10 Regent



6 x 8 Regent
Mill Finish

Strength
and durability



6 x 10 Regent

Robinsons Regent greenhouses are ideal for the smaller garden, where space is at a premium. They are a generous 6'5³/₄" (1976mm) wide and available in various lengths. Unlike many smaller greenhouses, there is a full 5'6¹/₂" (1691mm) working height at the eaves, giving a surprising amount of space.

As with all Robinsons greenhouses, the Regent has a ground-level threshold, providing unimpeded access. The door is lockable and affords a 2' (610mm) wide opening.

Although it is supplied with easy-to-understand self-assembly instructions, we strongly advise that your greenhouse be installed by experienced personnel. Please contact your local agent for further details.

Regent Specifications

The standard Regent Greenhouse comes with the following dimensions:

Colour	Mill / Green / White
Width	6' 5 ³ / ₄ " (1.976m)
Ridge Height	7' 4 ¹ / ₂ " (2.249m)
Eaves Height	5' 6 ¹ / ₂ " (1.691m)
Roof Vents	24" x 24" (610 x 610mm)
Dwarf wall option	Add 3 ¹ / ₄ " (84mm) to the ridge and eaves height

Standard module lengths	Number of roof vents
6' 7 ³ / ₄ " (2.024m)	1 - with automatic XL opener
8' 8 ¹ / ₈ " (2.644m)	1 - with automatic XL opener
10' 8 ¹ / ₂ " (3.264m)	2 - with automatic XL openers
12' 8 ⁷ / ₈ " (3.884m)	2 - with automatic XL openers
14' 9" (4.504m)	2 - with automatic XL openers
16' 9" (5.124m)	2 - with automatic XL openers

Additional lengths are available - please ask your local agent

The standard Regent Greenhouse consists of:
Single Sliding Lockable Door · Level door threshold · Opening Roof Vents and automatic openers (dependant on length - see chart)
Eaves Guttering with integral Downpipes · Unique capping and stainless steel fixings · **PLUS 4mm Toughened Safety Glass throughout.**

Personalise your greenhouse with our range of accessories.

Ask about our **SUMMER PACKAGE DEALS** unique special offers with extra savings only from Summer Greenhouses

Royale 8^{WIDE}



Dwarf Wall option available. See page 9



8 x 8 Royale



8 x 10 Royale

'Being a life-long enthusiastic gardener, losing a leg could well have spelled the end of such activities for my wife, Joan.'

'Last summer we purchased one of your Royale models with wide opening doors and toughened glass - Eureka!! Problem solved.'

Mr J A Slade, Gloucester

The Robinsons Royale greenhouse is the most popular in our range. This is not surprising as it is a full 8'6¹/₄" (2596mm) wide and available in various lengths. The double doors give a 4' (1220mm) wide opening and are a particularly useful feature of this model - they slide easily, are lockable and provide easy access over

the ground-level threshold - ideal for wheelbarrow or wheelchair access.

The Royale range also has the advantage of an optional extra fully glazed partition with a single sliding door - a real must if you want to create a cost-saving propagating area or minimise heating costs during the winter.



Royale Specifications

The standard Royale Greenhouse comes with the following dimensions:

Colour	Mill / Green / White
Width	8' 6 ¹ / ₄ " (2.596m)
Ridge Height	7' 4 ¹ / ₂ " (2.249m)
Eaves Height	5' 6 ¹ / ₂ " (1.691m)
Roof Vents	24" x 24" (610 x 610mm)
Dwarf wall option	Add 3 ¹ / ₄ " (84mm) to the ridge and eaves height

Standard module lengths	Number of roof vents
6' 7 ³ / ₄ " (2.024m)	1 - with automatic XL opener
8' 8 ¹ / ₈ " (2.644m)	1 - with automatic XL opener
10' 8 ¹ / ₂ " (3.264m)	2 - with automatic XL openers
12' 8 ⁷ / ₈ " (3.884m)	2 - with automatic XL openers
14' 9" (4.504m)	2 - with automatic XL openers
16' 9" (5.124m)	2 - with automatic XL openers

Additional lengths are available - please ask your local agent

The standard Royale Greenhouse consists of:
Double Sliding Lockable Doors · Level door threshold · Opening Roof Vents and automatic openers (dependant on length - see chart)
Eaves Guttering with integral Downpipes · Unique capping and stainless steel fixings · **PLUS 4mm Toughened Safety Glass throughout.**

Personalise your greenhouse with our range of accessories.

For expert advice 7 days a week phone Summer Greenhouses free on 0800 9777 828 or visit www.SummerGreenhouses.com

Rosette 10^{WIDE}



Dwarf Wall option available. See page 9

10 x12 Rosette



10 x14 Rosette

'Thank you for your assistance along the way.'

'We are very pleased with the overall result and feel your sales service was a great help.'

Dr A G Mathie, Cheshire



10 x16 Rosette

These superb greenhouses have been designed for everyone from the enthusiastic amateur to the professional nurseryman. **Robinsons** Rosette greenhouses are 10'6³/₄"(3220mm) wide and available in various lengths. The width provides ample growing space and, with

the central double doors, allows for up to 3'1"(940mm) wide greenhouse staging to be positioned both sides of the greenhouse. The Rosette features a 5'6¹/₂"(1691mm) eaves height and a ground-level threshold, giving freedom of access for garden machinery and wheelbarrows.

The Rosette Greenhouse can be fitted with a fully glazed partition to provide a cost-saving propagating area, with a choice of either single or double doors.

Rosette Specifications

The standard Rosette Greenhouse comes with the following dimensions:

Colour	Mill / Green / White
Width	10' 6 ³ / ₄ " (3.220m)
Ridge Height	7' 4 ¹ / ₂ " (2.249m)
Eaves Height	5' 6 ¹ / ₂ " (1.691m)
Roof Vents	24" x 24" (610 x 610mm)
Dwarf wall option	Add 3 ¹ / ₄ " (84mm) to the ridge and eaves height

Standard module lengths	Number of roof vents
8' 8 ¹ / ₈ " (2.644m)	2 - with automatic XL opener
10' 8 ¹ / ₂ " (3.264m)	3 - with automatic XL openers
12' 8 ⁷ / ₈ " (3.884m)	3 - with automatic XL openers
14' 9" (4.504m)	4 - with automatic XL openers
16' 9" (5.124m)	4 - with automatic XL openers
18' 9" (5.744m)	5 - with automatic XL opener

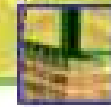
Additional lengths are available - please ask your local agent

The standard Rosette Greenhouse consists of:
 Double Sliding Lockable Doors · Level door threshold · Opening Roof Vents and automatic openers (dependant on length - see chart)
 Eaves Guttering with integral Downpipes · Unique capping and stainless steel fixings · **PLUS 4mm Toughened Safety Glass throughout.**

Personalise your greenhouse with our range of accessories.

Ask about our LOW COST INSTALLATION professional fitting at the lowest prices only from Summer Greenhouses

Regal 12^{WIDE}



Dwarf Wall option available. See page 9



12 x16 Regal Mill Finish



All the growing space you need

The Regal greenhouse is the widest model in our extensive range. The Regal is 12'6" (3836mm) wide, with lengths from 8'8¹/₈"(2644mm) upwards in 2' (610mm) increments. There is no limit on the length. It is available in green, white or mill finishes and comes with 4mm toughened glass as standard.

The major technical difference between the Regal and its smaller sisters is the degree of stiffening of the frame. Ridge and eaves braces are applied to every set of glazing bars - every two feet - and extra structural stiffness is added to the door gable.

The design uses only 6'1"(1860mm) extensions which means that any building over 8' (2440mm) long has at least one internal 'A' frame wind brace. The result is an exceptionally strong building. It is essential that a building of this span has a continuous concrete or brick perimeter footing.

Regal Specifications

The standard Rosette Greenhouse comes with the following dimensions:

Colour	Mill / Green / White
Width	12' 6" (3.863m)
Ridge Height	7' 4 ¹ / ₂ " (2.249m)
Eaves Height	5' 6 ¹ / ₂ " (1.691m)
Roof Vents	24" x 24" (610 x 610mm)
Dwarf wall option	Add 3 ¹ / ₄ " (84mm) to the ridge and eaves height

Standard module lengths	Number of roof vents
8' 8 ¹ / ₈ " (2.644m)	2 - with automatic XL opener
10' 8 ¹ / ₂ " (3.264m)	3 - with automatic XL openers
12' 8 ⁷ / ₈ " (3.884m)	3 - with automatic XL openers
14' 9" (4.504m)	4 - with automatic XL openers
16' 9" (5.124m)	5 - with automatic XL openers
18' 9" (5.744m)	5 - with automatic XL opener

Additional lengths are available - please ask your local agent

The standard Regal Greenhouse consists of:
 Double Sliding Lockable Doors · Level door threshold · Opening Roof Vents and automatic openers (dependant on length - see chart)
 Eaves Guttering with integral Downpipes · Unique capping and stainless steel fixings · **PLUS 4mm Toughened Safety Glass throughout.**

Personalise your greenhouse with our range of accessories.

For expert advice 7 days a week phone Summer Greenhouses free on 0800 9777 828 or visit www.SummerGreenhouses.com

Riviera 8^{WIDE}

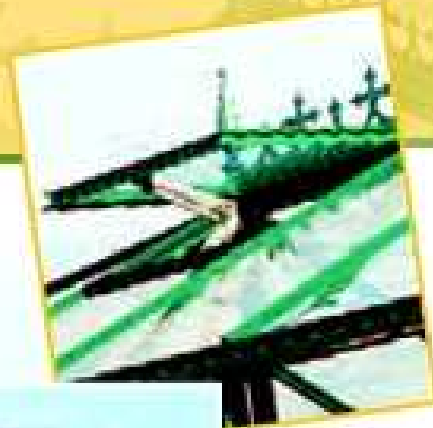


Dwarf Wall option available. See page 9



8 x10 Riviera

'As a proud owner of a Robinsons Riviera greenhouse, I can only congratulate you on the quality of workmanship which has helped enhance my garden.'
Mr I Robertson



8 x12 Riviera

Over 2m eaves height
- Dwarf Wall



The new Riviera Greenhouse, like all Robinsons greenhouses, is built to resist the toughest of weather conditions.

The design has an extremely attractive

hip-roof with very generous eaves and ridge heights. The Riviera is available in two sizes, 8 x 10 and 8 x 12, both of which include finials and cresting as standard, as well as two roof vents supplied with automatic openers.

NEW for this season is that doors can be located on either the end wall or the side walls. Remember to consider the staging configuration if placing the door on the side, and mark your order form clearly with your choice.

Riviera Specifications

The standard Riviera Greenhouse comes with the following dimensions:

Colour	Mill / Green / White	
Width	8' 6 1/4" (2.596m)	
Ridge Height	8' 8 1/2" (2.651m)	
Eaves Height	6' 4 7/8" (1.945m)	
Roof Vents	24" x 24" (610 x 610mm)	
Dwarf wall option	Add 3 1/4" (84mm) to the ridge and eaves height	

Standard module lengths	Number of roof vents	Number of louvres
10' 8 1/2" (3264mm)	2	1
12' 8 7/8" (3884mm)	2	2

DOUBLE DOORS Can be placed in either side or end elevations

The standard Riviera Greenhouse consists of:
Double Sliding Lockable Doors · Level door threshold · Two opening Roof Vents with automatic openers, additional louvre side vent(s) (dependant on length - see chart) · Eaves Guttering with integral Downpipes · Unique capping and stainless steel fixings · Finials and Ridge Cresting · **PLUS 4mm Toughened Safety Glass throughout.**

Personalise your greenhouse with our range of accessories,

Ask about our **SUMMER PACKAGE DEALS** unique special offers with extra savings only from Summer Greenhouses

Dwarf Wall



Robinsons can provide you with a greenhouse suitable for building onto a 600mm high dwarf wall and will provide all the necessary drawings for your chosen builder to construct the footings and build a single brick wall with its doorway. The bricks used should be of good quality and not sand faced. Alternatively your local agent may be able to quote you or recommend a builder.

Sure to enhance any garden

8 x10 Royale Dwarf Wall in a green finish

The greenhouse shown is based on the white finished Royale 8 x10 model with optional staging, shelving, louvre and ridge cresting and finials. The dwarf wall in this example has a semi-engineering brick course below ground, seven courses of LBC Tudors and a top course of Class A engineering blue bricks.

This new Robinsons Dwarf Wall range of attractive models, available in green, white or mill finish, has been designed to fit on a single skin dwarf wall - 1'11 5/8" (600mm) high.

A choice of five model widths and a variety of modular lengths are available.



Eaves and Ridge height are 3 1/4" (84mm) higher than the standard models

Dwarf Wall Specifications

Six models are available based upon the following dimensions, in any of our standard lengths:

Regent	6' 5 3/4" (1.976m) wide
Royale	8' 6 1/4" (2.596m) wide
Rosette	10' 6 3/4" (3.220m) wide
Regal	12' 6" (3.836m) wide
Riviera	8' 6 1/4" (2.596m) wide
Lean-To	5' 4" (1.625m) wide

See the appropriate pages in this brochure for further details of lengths available for each model.

Partitions available on all models except the Regent, Riviera and Lean-Tos.

The standard Dwarf Wall Greenhouse is available on the complete Robinsons range and consists of:
Double Sliding Lockable Doors · Level door threshold
Opening Roof Vents and automatic openers (dependant on model length - see relevant page) · Eaves Guttering with integral Downpipes · Unique capping and stainless steel fixings · **PLUS 4mm Toughened Safety Glass throughout.**

Personalise your greenhouse with our range of accessories.

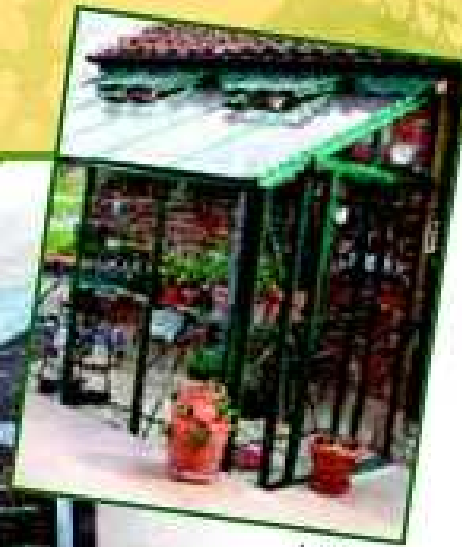
For expert advice 7 days a week phone Summer Greenhouses free on 0800 9777 828 or visit www.SummerGreenhouses.com

Lean-to 5WIDE

Personalise your greenhouse with our range of

Accessories

5x10 Lean-to Mill Finish



'We're delighted with our Robinsons Lean-to greenhouse and can't wait to get going with growing'

Mrs V Jackson, Wiltshire

Set against a garden wall, the Lean-to is the perfect home for peach trees or vines, while still giving you plenty of space to work in.

With a door that can be fitted at either end, the Robinsons Lean-to is a practical addition to any garden.

This multi-purpose building can be used as a greenhouse or sun lounge. If you plan direct access to your house, you can rest assured that your Robinsons greenhouse will conform with British Standards for toughened glass.

Robinsons' spacious Lean-to can be fixed to most walls, although a southerly aspect is preferable. No extra base plinth is required, so there is no unsightly, proud threshold to trip you up.

The Dwarf Wall option

It is critical that you obtain detailed instructions from the Robinsons Technical Department before installation of base and dwarf wall

Lean-to Specifications

The standard Lean-to Greenhouse comes with the following dimensions:

Colour	Mill / Green / White
Width	5' 4" (1.625m)
Ridge Height	7' 4 1/2" (2.249m)
Eaves Height	5' 6 1/2" (1.691m)
Roof Vents	24" x 24" (610 x 610mm)
Dwarf wall option	Add 3 1/4" (84mm) to the ridge and eaves height
Standard module lengths	Number of roof vents
6' 7 3/4" (2.024m)	1 - with automatic XL opener
8' 8 1/8" (2.644m)	1 - with automatic XL opener
10' 8 1/2" (3.264m)	2 - with automatic XL openers
12' 8 7/8" (3.884m)	2 - with automatic XL openers
14' 9" (4.504m)	2 - with automatic XL openers
16' 9" (5.124m)	2 - with automatic XL openers

Additional lengths are available - please ask your local agent

The standard Lean-to Greenhouse consists of:

Single Sliding Lockable Door · Level door threshold · Opening Roof Vents and automatic openers (dependant on length - see chart) Eaves Guttering with integral Downpipes · Unique capping and stainless steel fixings · **PLUS 4mm Toughened Safety Glass throughout.**

Personalise your greenhouse with our range of accessories.

Summer Greenhouses
Phone us free on 0800 9777 828
www.SummerGreenhouses.com



Ridge Cresting for the freestanding greenhouses to provide that distinctive finishing touch - available in white or green to suit each model.



Hanging basket brackets enable you to hang baskets from the glazing bars - no need for an obtrusive rail!



Partitions for the Royale, Rosette and Regal to enable you to create a separate propagating or over-wintering area within the greenhouse.



Aluminium and tanalised timber staging and shelving in a wide variety of widths and lengths to complement each greenhouse and provide all the growing space you'll ever need. Uniquely height adjustable and very robust.



An automatic opening roof vent with XL opener and a 6 bladed louvre vent (with or without automatic opener) will provide that essential extra ventilation for increasing levels of air circulation throughout the greenhouse.

EXTRA DOORS (in the end of your greenhouse).

	Regent 6	Royale 8	Rosette 10	Regal 12
Standard Model	Single door	Single or double door	Single or double door	Single or double door
Dwarf Model	Single door	Double door	Double door	Double door

PARTITION DOORS

Partition Doors	Not available	Single 2' door	Single 2' or double 4' door	Double 4' door
-----------------	---------------	----------------	-----------------------------	----------------